

# Business Matchmaking for visitors

Introduced with the aim of facilitating business connections between exhibitors and visitors, the Business Matchmaking Program is a vital tool for exhibitors and visitors pre-show, which allows you to efficiently set your meeting agendas for maximum benefit. In order to schedule meetings, complete your online visitor pre-registration, and **our team will email you with your login credentials** to access the Program. This will provide a personalised report, listing out all relevant exhibiting companies at the show with similar business interests – it's about meeting the right people in the right place at the right time.

## Features of the program:

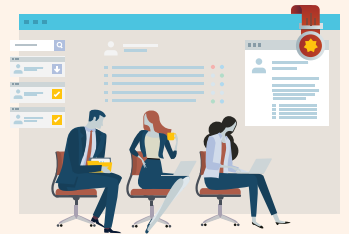
**1. Search** for exhibitors based on company, products or country of origin



**2. Identify** which exhibitors you want to meet at the show



**3. Schedule** your meetings before you arrive



For more information,  
email our Business Matchmaking Team:  
[info@bizmatchmaking.net](mailto:info@bizmatchmaking.net)

[➔ View a step-by-step tutorial on Business Matchmaking process](#)

